

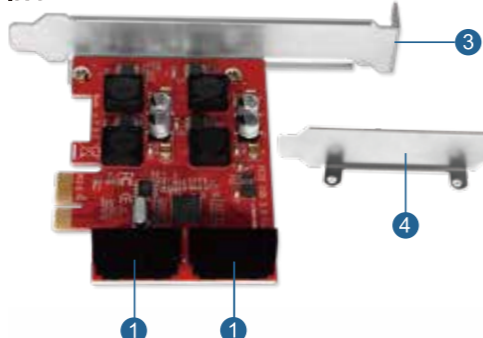


PCIE USB 3.0 Expansion Card

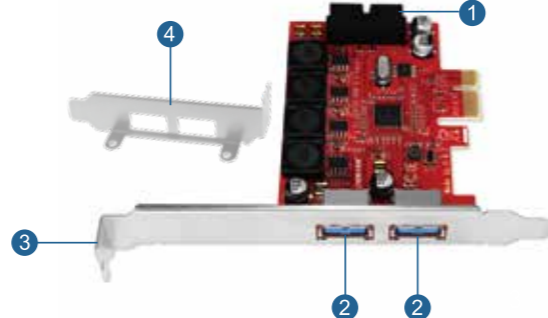
Model: PCE-IN4 PCE-IN2EX2
Site:www.lteriver.com Email:support@lteriver.com

1

PCE-IN4



PCE-IN2EX2



2

- 1 USB 3.0 19Pin Header
- 2 USB 3.0 Interface
- 3 Standard Size Bracket
- 4 Low Profile Bracket

Product Description:

PCE-IN4 provide 2X internal 19pin USB 3.0 19Pin ports for desktop computers front pannel or industrial device,Each 19Pin header will extend to 2X USB-A ports.The extended USB A ports will provide superspeed 5Gbps data transfer speed in total,Built in LTERIVER Smart Power Control Technology for high-power consuming device such as HDD, SSD enclosure.Low profile and standard size bracket inside for both standard size and slim PCs. PCIE2.0 X1 interface design will work on PCIE X1,X2,X4,X8,X16 slot.

PCE-IN2EX2 provide 1X Internal USB 3.0 19 pin header and 2X external USB 3.0 Type A ports for desktop computers.Allow connected device get 5Gbps data speed in total. Built in LTERIVER Smart Power Control Technology for high power consuming device such as HDD,SSD enlosure.Low profile and standard size bracket inside for both standard size and slim PCs.PCIE 2.0 X1 interface design will work on PCIE X1,X2,X4,X8,X16 slot.

System Requirements:

Driver free on Windows 11,10,8.1,8 (32/64bit) and Windows Server 2012,2012R2,2016,2019,2022 (32/64bit) systems. Need to install driver on Windows XP,7,Vista(32/64bit) and Windows Server 2003,2003R2,2008,2008R2 system.

3

LTERIVER Smart Power Control Technology:

LTERIVER Smart Power Control is a new solution to provide more power supply on PCIE USB 3.0 cards.The previous versions of PCIE USB 3.0 card need to plug an external power cable from PCs power source.PCIE device can get 75W(12V/6.25A) max power from motherboard. LTERIVER smart power control technology transfer 12V/6.25A to 5V/15A max by added on voltage transformers and power modules.Allow each USB port to get 5V/2A max power.Most of high power consuming USB devices just need 5-9W,smart power control technology will allow USB device to get 10W max power,Which means this USB 3.0 expansion card can be running a few high power-consuming devices simultaneously in high speed.Apart from this, LTERIVER smart power control technology built safety electric circuit protector and voltage inductance on each USB port to make sure users never burn USB device or lose data.Enjoy stable,super fast and safe USB connection with easy installation.

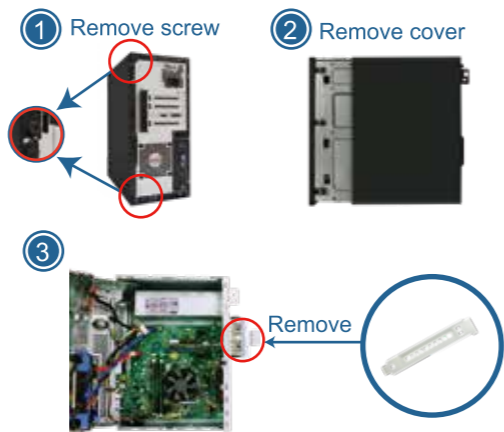
Package:

PCE-IN4	PCE-IN2EX2
1XPCE-IN4	1XPCE-IN2EX2
1XUser Manual	1XUser Manual
1XLow Profile Bracket	1XLow Profile Bracket

4

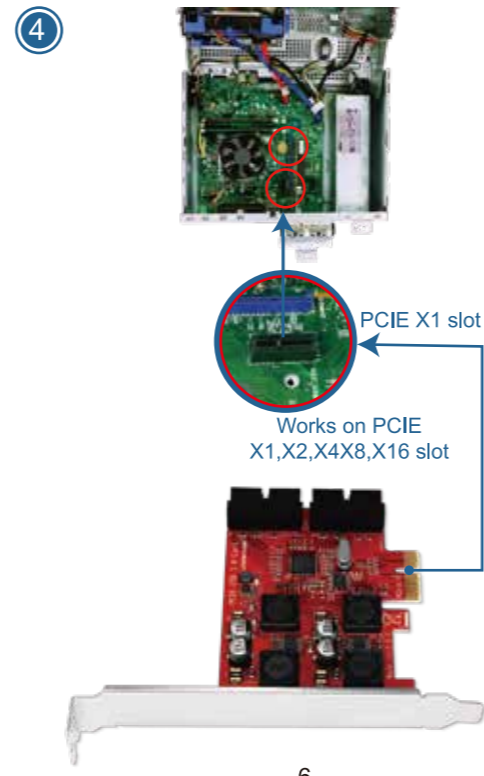
Add USB Card on Desktop PCs:

Step1,Switch OFF PC,unplug computer from main socket,unplug power cord and other connected peripherals.Remove the cover from computer case.



Step2,Find correct PCI Express slot from motherboard, insert USB 3.0 card into an empty PCI-E slot.

5



6

Step3,Reattach the computer cover,and put back removed peripherals,power on desktop computer.



Added on USB Ports

7

Check If USB Card Works on Computers:

1.Users can plug universal USB device such as USB flash drives,keyboards,mouse etc.Check if computer can find these devices.If system read USB devices, means no need to install driver, can use these added on USB 3.0 ports now.

Step2,Complete driver installation.

1.Double right-click"USB Card"



USB Card

2.Waiting files ready to install.

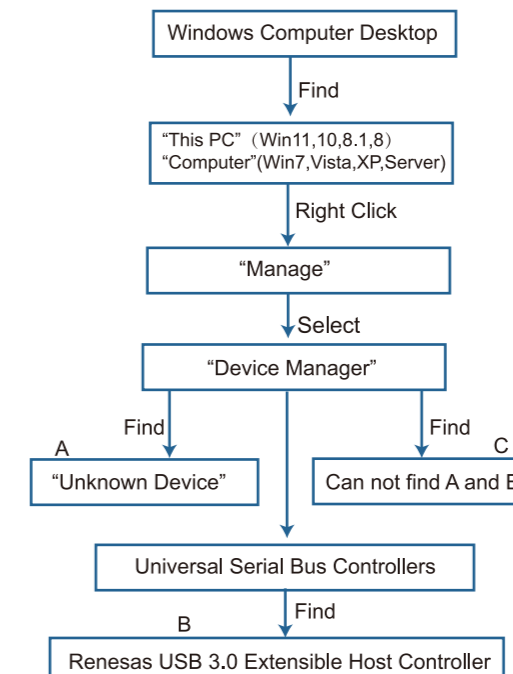


3.Click "Next"



10

2.Find this added on USB card hardware in Windows system "Device Manager" and check if system read it.



8

4.Accept the license,click"Next"



5.Click "install"



6.Waiting for driver installation.



11

A,Means PCs find hardware correctly , need to install driver.
B,Means USB card hardware correctly placed and system loaded driver already, users can use it now.
C,Means PCs can not find the added on USB card and not load driver for USB card.Users need to re-plug USB card on motherboard PCIE slot,and better change to an active PCIE slot for USB card.

Install Driver on Desktop PCs:

1.PCE-IN4 and PCE-IN2EX2 are based on Renesas USB 3.0 host controller.These models share the same installation steps on Windows 11,10,8.1,8,7,XP,Vista(32/64bit) and Windows Server 2003,2003R2,2008,2008R2,2012,2012R2, 2016,2019,2022 (32/64bit).

2.Most of Windows 11,10,8.1,8 (32/64bit) and Windows Server 2012,2012R2,2016,2019,2022 (32/64bit) will load driver automatically.If it can not read on your system and read "Unknown Device" in Windows "Device Manager", just need install driver.

3.Most of Windows XP,Vista,7(32/64bit) and Windows Server 2003,2003R2,2008,2008R2(32/64bit) will read as "Unknown Device" in "Device Manager", install driver please.

Step1,Visit www.lteriver.com to download driver. Open ZIP file folder "Renesas" and find "USB Card .exe".

9

7.Click "Finish",and start using the new USB ports.



User FAQ:

1.How many USB device will be lighted up simultaneously?
Actually with Smart Power Control technology, users can run high power consumption device in all USB ports without issues.
2.Why are my USB hard drive and flash drives transferring data at a lower speed than official speed?

1.If USB flash drives is USB 2.0 device, it will run in 2.0 speed. Make sure it is a USB 3.0 device that will pick a USB 3.0 speed.
2.USB external Hard Disks are in different speed between SSD and HDD. SSD transfers much faster than HDD.

3.Does this USB ports still support external USB HUBs or other extension device?

Yes,this is a Host Controller USB Extensible Card, it will allow connection to extension USB HUBs.

4.Where can I get tech support, driver download and warranty?
Contact Us:support@lteriver.com
Driver Download:www.lteriver.com

12