

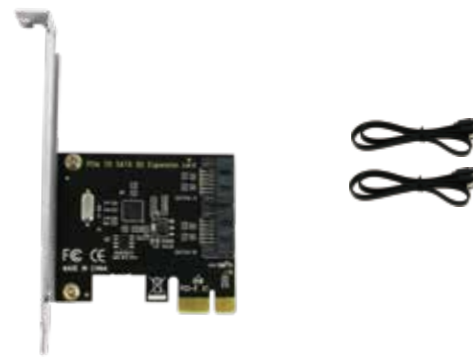


PCI Express 6Gbps SATA III Card

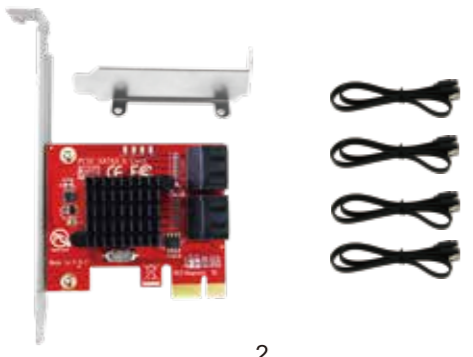
Model: PCE-G2S2 PCE-G2S4 PCE-G2S6
Site:www.lteriver.com Email:support@lteriver.com

1

PCE-G2S2 2-Ports PCIE 2.0 X1 SATA III Card

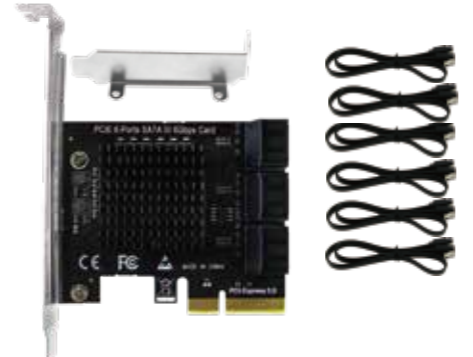


PCE-G2S4 4-Ports PCIE 3.0 X1 SATA III Card



2

PCE-G2S6 6-Ports PCIE 3.0 X4 SATA III Card



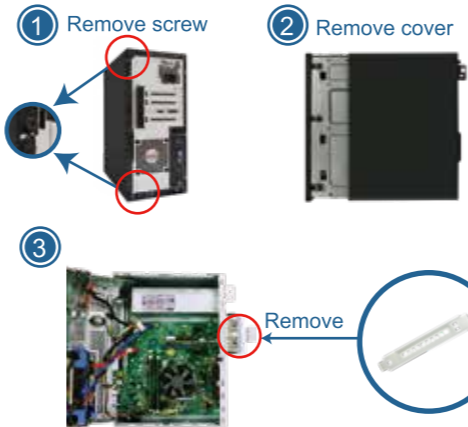
Compatible System:

Mac OS: Plug and Play on MAC OS 10.4,10.5,10.6, 10.7,10.8,10.9,10.10,10.12,10.13,10.14,10.15
Windows: Plug and Play on Windows 11,10.8.1,8.7, Vista,XP,2003 (32/64bit) and Windows Server 2003, 2003R2,2008,2008R2,2012,2012R2,2016,2019,2022 (32/64bit).
Linux Kernel: Most of main stream Linux kernel support plug and play.

3

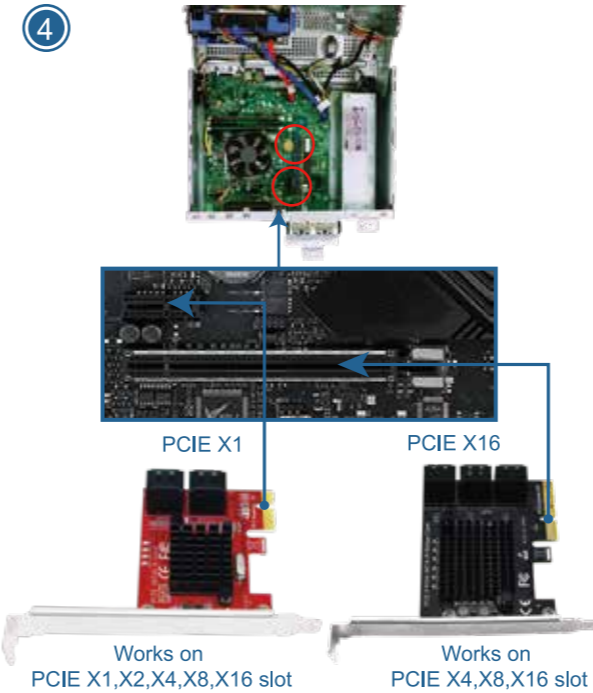
Add PCIE SATA Card on Desktop PCs:

Step1,Switch OFF PC,unplug computer from main socket,unplug power cord and other connected peripherals.Remove the cover from computer case.



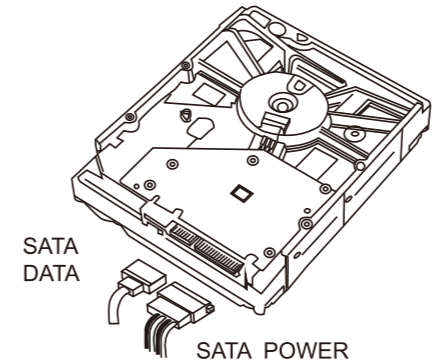
Step2,Find correct PCI Express slot from motherboard, insert PCIE SATA card into an empty PCI-E slot.

4



5

Step3,Connect to 3.5in or 2.5in hard drive disk on this PCIE SATA card by packed SATA cable and connect to SATA power from PSU.



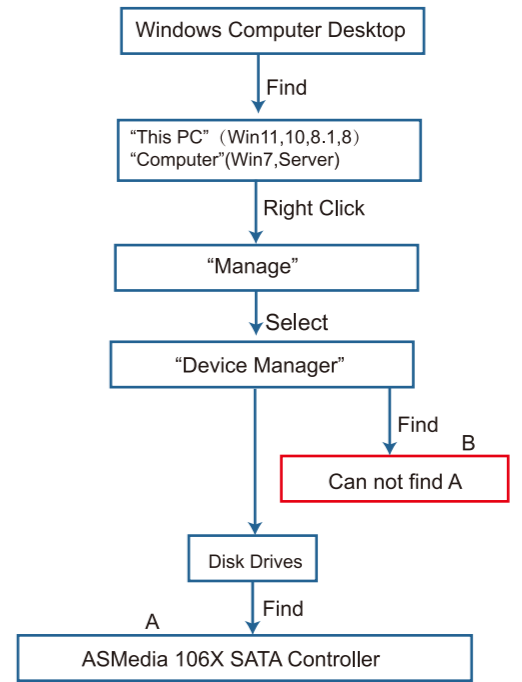
Step4,Reattach the computer cover,and put back removed peripherals,power on desktop computer.

Check If SATA Card Works on Computers:

1.Users can check if PC find the HDD/SSD on PCs or industrial device.If PCs find these added-on HDD/SSD, means device work properly.If users add new or recoverd HDD/SSD on PCs, need to add these hard drives in Windows Device Manager-Disk Management-Find the new drives, select it and add it on PCs system.

6

2.Find this added on SATA card hardware in Windows system "Device Manager" and check if system read it.



7

A. Means PCIE SATA card starts up and works properly.
B. Means PCIE SATA card does not start up,please put this PCIE SATA card in an active PCIE slot.This PCIE slot is no function now.Make sure this PCIE slot is in "enable" in PCs BIOS setting.

User FAQs:

1. This card starts up but I can not see the none boot HDD/SSD,how to do next ?
If user's HDD/SSD is new or recovered empty disk, please go to Windows Device Manager-Disk Management-Find the new drives, select it and add it as new volume on PCs system.Then you can see it in PCs.
2. My PC report BSD/Blue Screen Death,endless restart or can not start,how to do next ?
A. This SATA card was set on AHCI mode,user can remove this card and go to Windows Device Manager -IDE ATA/ATPI Controller-Check now PCs start up mode in SATA AHCI or IDE. If it is in IDE mode, users need to reinstall PC system under AHCI boot up mode.
B. If the PCs system is now in AHCI mode,we guess user is adding another system disk,maybe removed from other PCs.In this case go to BIOS setting-Boot Up Option-Set the Boot disk on the original system disk, problem will be sloved.

8