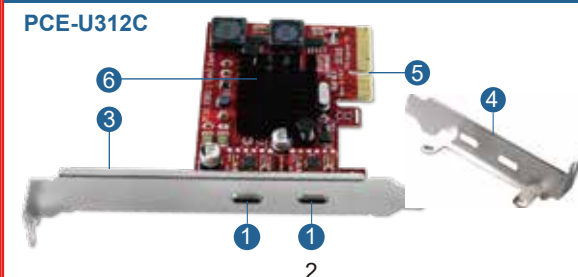
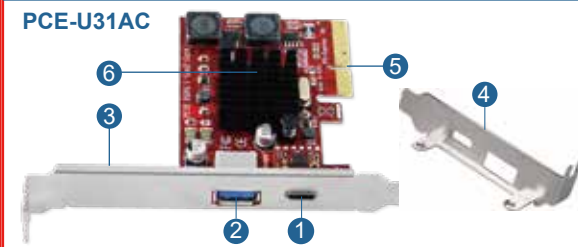
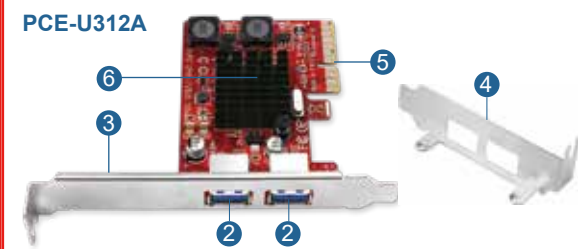




## PCI Express 3.0 X4 USB 3.1 GEN2 10GbpsExpansion Card

Model: PCE-U312A PCE-U31AC PCE-U312C  
Site:www.lteriver.com Email:support@lteriver.com

1



- 1 USB 3.1 Type C port
- 2 USB 3.1 Type A port
- 3 Full height bracket
- 4 Low profile bracket
- 5 PCIE 3.0 X4 Interface
- 6 Heat-Sink

### Product Description:

- 1.PCIE 3.0 X4 design will provide 16Gbps total bandwidth.
- 2.Each USB port will get 10Gbps max data transfer speed.
- 3.If put it on PCIE 2.0 X4 slot motherboard,speed will get 10Gbps total bandwidth on two USB 3.1 GEN2 ports.
- 4.Mounted with full size bracket and packed with low profile bracket.Works on both standard size PCs and slim size PCs.
- 5.Built in LTERIVER Smart Power Control Technology for high power consuming device such as HDD,SSD enclosure.
- 6.Based on ASMedia ASM3142, the 3rd generation USB 3.1 GEN2 chipset.
- 7.Compatible with PCIE 2.0,3.0,4.0 standard on mother-board X4,X8,X16 slot.

### Compatible systems:

- Mac OS:** Plug and Play on MAC OS 10.9,10.10,10.12,10.13,10.14,10.15 and later version system. NOT support MAC OS 10.11 system.
- Windows:** Plug and Play on Windows 11,10.8.1,8(32/64bit) and Windows Server 2012,2012R2,2016,2019,2022 (32/64bit) systems.  
Need to install driver on Windows 7(32/64bit) and Windows Server 2008,2008R2(32/64bit) system.
- Linux Kernel:** Supports most main stream Linux kernel.

3

### LTERIVER Smart Power Control Technology:

LTERIVER Smart Power Control Technology is a new solution to add enough power supply on USB cards.The old version USB host controller need to install additional power cable or it can not light up device.The LTERIVER Smart Power Control Technology designed 2X voltage transformer to pick up power from mother board PCIE slot,convert 12V/2.5A power to USB 5V/6A and allocate 5V/3A to each USB 3.1 port.Meanwhile,LTERIVER Smart Power Control Technology equipped 2X fuse and 2X solid capacitor to protect connected USB 3.1 device from overload,overcurrent or overheat.Make sure all connected USB devices running in high performance.

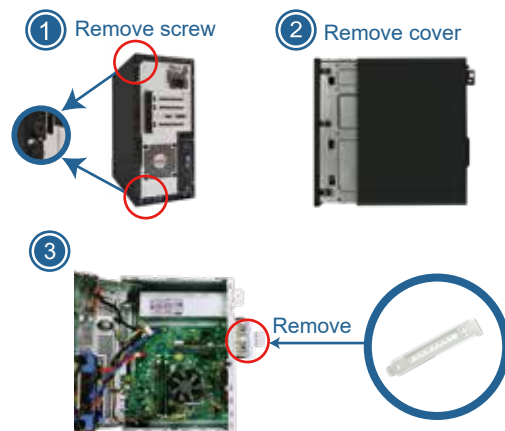
### Package List:

- PCE-U312A:**1X PCE-U312A,1X User Manual, 1X Low Profile Bracket,1X Mounting Screw.
- PCE-U31AC:**1X PCE-U31AC,1X User Manual, 1X Low Profile Bracket,1X Mounting Screw.
- PCE-U312C:**1X PCE-U312C,1X User Manual, 1X Low Profile Bracket,1X Mounting Screw.

### Add USB Card on Desktop PCs:

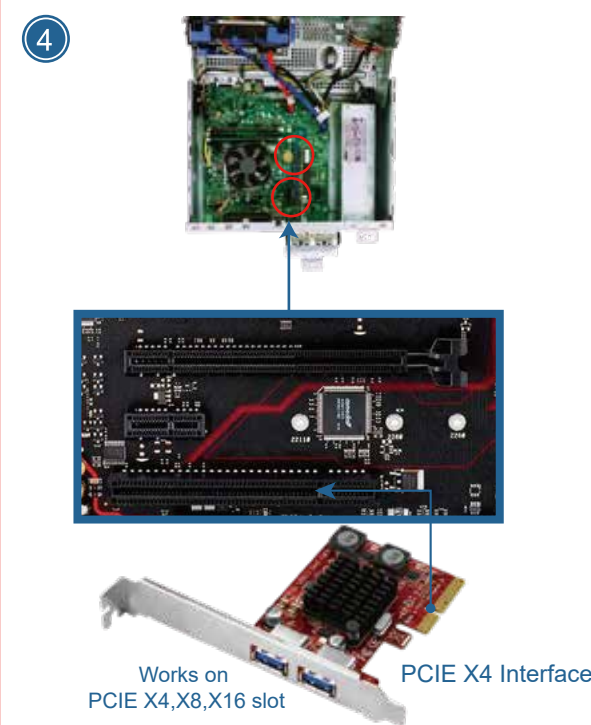
**Step1,**Switch OFF PC,unplug computer from main socket,unplug power cord and other connected peripherals.Remove the cover from computer case.

4



**Step2,**Find correct PCI Express slot from motherboard, insert USB 3.1 GEN2 card into an empty PCI-E slot.

5



Works on PCIE X4,X8,X16 slot

6

**Step3,**Reattach the computer cover,and put back removed peripherals,power on desktop computer.



Added on USB Ports

7

### Check If USB Card Works on Computers:

- 1.Users can plug universal USB device such as USB flash drives,keyboards,mouse etc.Check if computer can find these devices.If system read USB device, means no need to install driver and can use these added on USB ports now.

**Step2,**Complete driver installation.

- 1.Double right-click"USB Card"



Setup.exe

- 2.Waiting files ready to install.

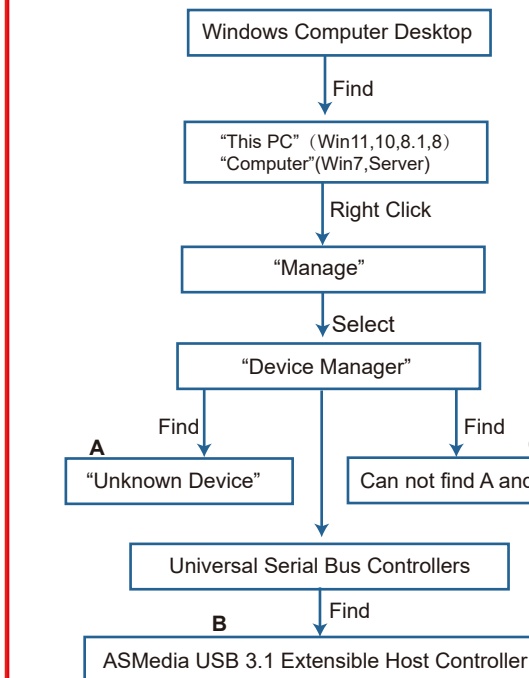


- 3.Click "Next".



10

- 2.Find this added on USB card hardware in Windows system "Device Manager" and check if system read it.



8

- 4.Accept the license,click"Next"



- 5.Waiting for driver installation.



11

- A,Means** PCs find hardware correctly,need to install driver.
- B,Means** USB card hardware correctly placed and system loaded driver already, users can use it now.
- C,Means** PCs can not find the added on USB card and not load driver for USB card.1.Users need to re-plug USB card on motherboard PCIE slot.2.Users better change to another active PCIE slot for this USB card.

### Install Driver on Desktop PCs:

- 1.PCE-U312A,PCE-U31AC and PCE-U312C are based on ASMedia USB 3.1GEN2 host controller.These models share the same installation steps on Windows 11,10.8.1,8,7 and Windows Server2008,2008R2, 2012,2012R2,2016,2019, 2022 (32/64bit).
- 2.Most of Windows 11,10.8.1,8 (32/64bit) and Windows Server 2012,2012R2,2016,2019,2022 system will load driver automatically.If it can not read in users system, but read "Unknown Device" in Windows "Device Manager",no worry, just install driver.
- 3.Most of Windows 7(32/64bit) and Windows server 2008, 2008R2(32/64bit) system will read as "Unknown Device" in "Device Manager",install driver please and it will work then.

**Step1,A.**Visit www.lteriver.com-Bottom of homepage Click "Drivers"-Find model number, download"ASM3142" ZIP file and release it.Find "Setup.exe" and double right-click.

9

- 6.Click "Finish",and start using the new USB ports.



### User FAQs:

- 1.How many USB device will be lighted up simultaneously? Actually with smart power control technology, users can run high power consumption device in all USB ports without issues.
- 2.Why are my USB hard drive and flash drives transferring data at a lower speed than official speed?
  - 1.If USB flash drives is USB 2.0 device, it will runs in 2.0 speed. Make sure it is a USB 3.1 GEN2 device that will pick 10Gbps speed.
  - 2.USB external hard drive disks are in different speed between SSD and HDD. SSD transfers much faster than HDD.
- 3.Does this USB ports still support external USB HUBs or other extension device? Yes,this is an extensible USB host controller card, it will allow connection to extension USB device such as USB HUB.
- 4.Where can I get tech support, driver download and warranty? Contact Us:support@lteriver.com Driver Download:www.lteriver.com

12