



## PCIe USB 3.1 Gen1 5Gbps Card

PCE-U302C PCE-U302AE

Site:www.lteriver.com Email:support@lteriver.com

1

### PCE-U302C



### PCE-U302AE



2

### Product Description:

**PCE-U302C** is a 2-Ports USB-C PCIe USB 3.1 Gen1 expansion card. It allows users to add 2X super speed USB 3.1 Gen1 type C ports on PCs. The 2X USB-C ports will provide 5Gbps max connection speed. Built in Smart Power Control Technology, no need any external power but provide enough power supply for USB devices such as VR headset and SSD/HDD enclosure.

**PCE-U302AE** is a PCIe USB 3.1 Gen1 5Gbps expansion card. It will provide 2X USB 3.1 Gen 1 USB-A 5Gbps ports and 1X USB 3.1 Gen 2 Type E Key A 5Gbps ports on desktop PCs. The USB type E ports will extend to PCs front panel USB-C ports. Built in Smart Power Control Technology, no need any external power but provide enough power supply for USB devices such as VR headset and SSD/HDD enclosure. It is also compatible with normal USB devices such as keyboard, mice, flash drive, hubs, KVM switch etc.

### Product Features:

1. Add more USB 3.1 Gen1 5Gbps max ports on PCs by PCIe slot, more stable than external USB hub.
2. 5Gbps total bandwidth, all USB 3.1 Gen1 ports will share this 5Gbps bandwidth.

3

**Step3**, Reattach the computer cover, and put back removed peripherals, power on desktop computer.



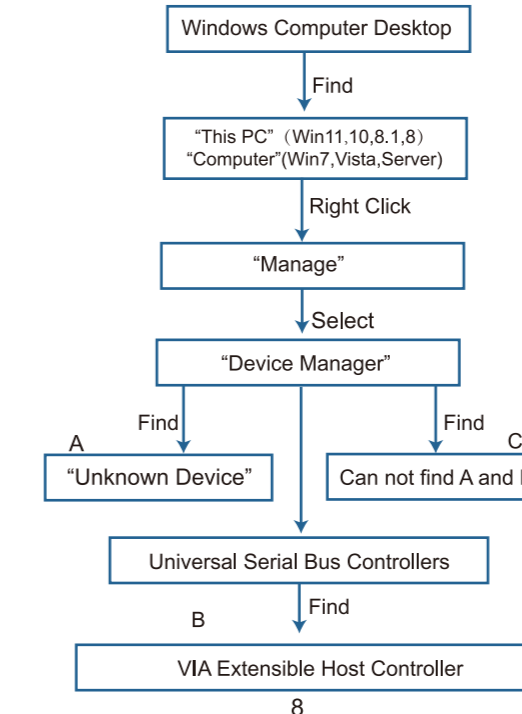
Added on USB Ports

### Check If USB Card Works on Computers:

1. Users can plug universal USB devices such as USB flash drives, keyboards, mouse etc. Check if computer can find these devices. If system read USB device, means no need to install driver, can use these added on USB ports now.

7

2. Find this added on USB card hardware in Windows system "Device Manager" and check if system read it.



8

A, Means PCs find hardware correctly, need to install driver.  
 B, Means USB card hardware correctly placed and system loaded driver already, users can use it now.  
 C, Means PCs can not find the added on USB card and not load driver for USB card. Users need to re-plug USB card on motherboard PCIe slot, or users better change to another active PCIe slot for this USB card.

### Install Driver on Desktop PCs:

1. PCE-U302C and PCE-U302AE are based on VIA Lab USB 3.1 Gen1 host controller serial. These models share the same installation steps on Windows 11, 10, 8, 1, 8, 7 and Windows Server systems.
2. Most of Windows 11, 10, 8, 1, 8 (32/64bit) and Windows server 2012, 2012R2, 2016, 2019, 2022 system will auto-load driver. If it can not read on your system and read "Unknown Device" in Windows "Device Manager", no worry, just install driver.
3. Most of Windows 7, Vista, XP (32/64bit) and Windows server 2003, 2003R2, 2008, 2008R2 (32/64bit) system will read as "Unknown Device" in "Device Manager", install driver please and it will work then.

**Step1**, Visit www.lteriver.com- Bottom of homepage Click "Drivers"- Find model number, download "VIALab" ZIP file and release it. Find "Setup.exe" and double right-click.

9

3. Equipped with Smart Power Control Technology, will light up all connected USB devices simultaneously.
4. PCIe 2.0 X1 interface design will work on PCIe 4.0 3.0/2.0/1.0 motherboard on PCIe X1, X2, X4, X8, X16 slot.
5. Based on VIA Lab VL805 USB host controller solution.
6. Mounted with full height bracket for standard size PCs, No low profile bracket, not works on slim PCs.
7. Compatible with AMD, Intel, ARM hardware platform.

### Smart Power Control Technology

Smart Power Control (SPC) Technology is a new solution to provide more power supply on PCIe USB 3.1 Gen1 Cards. PCIe Device can get 75W(12V/6.25A) max Power from Mother Board. SPC technology transfer 12V/6.25A to 5V/15A max by added on voltage transformers and power modules. Allow each USB Ports get 5V/3A max power. Apart from this, SPC technology builds safety electric circuit protector on each USB Ports make sure users never burn USB device or lose data. Enjoy stable, super fast and safe connection with easy installation.

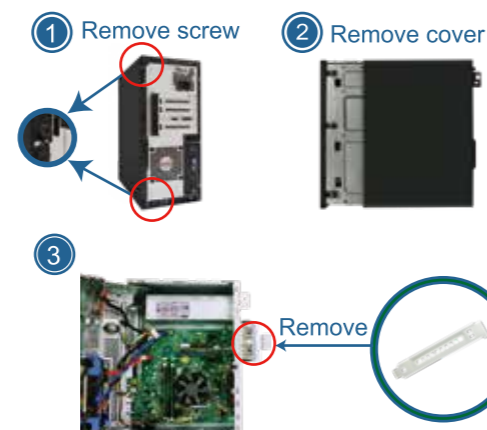
### Compatible System:

Driver free on Windows 11, 10, 8, 1, 8 and Windows Server 2012, 2012R2, 2016, 2019, 2022 (32/64bit) systems. Need to install driver on Windows Server 2003, 2003R2, 2008, 2008R2, XP, 7, Vista (32/64) systems.

4

### Add USB Card on Desktop PCs:

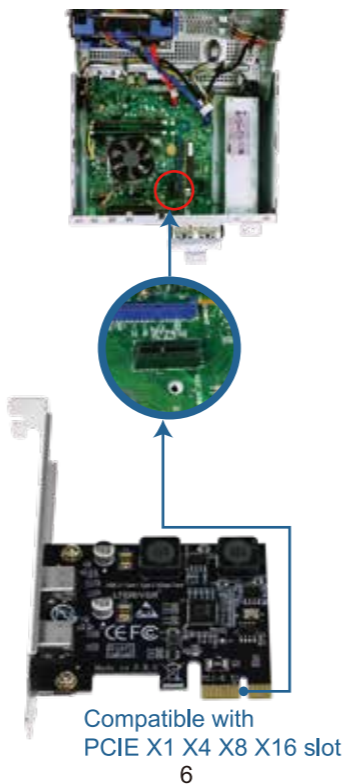
**Step1**, Switch OFF PC, unplug computer from main socket, unplug power cord and other connected peripherals. Remove the cover from computer case.



**Step2**, Find correct PCI Express slot from motherboard, insert USB card into an empty PCI-E slot.

5

④



6

**Steps2**, Running the driver.

1. Double right-click.



2. Click "Next".



3. Click "Next".



10

4. Accept the license, click "Next"



5. Click "Next" three times, install driver.



6. When installation done, click "finish"



11

7. Click "Yes restart the computer now"



### User FAQs:

1. Why do I get a USB 2.0 speed not 3.0?  
Please make sure USB device meets USB 3.0 protocol, or device may not get a USB 3.0 speed.
2. How many HDD can work on these USB cards?  
As we stated it builds in Smart Power Distribution Technology, all USB ports support high power consumption devices including HDD devices or VR Sensors.
3. Is this USB card support External USB HUB?  
Yes, and no limitations. Actually support 127 ports max.
4. Is this support Boot PC BIOS?  
No, All added on card can not join in BIOS control, it is because of mother board manufactures limitation.
5. How to contact you?  
Users can find us at www.lteriver.com or just send email to us at support@lteriver.com

12