



PCI Express Gigabit Ethernet Adapter

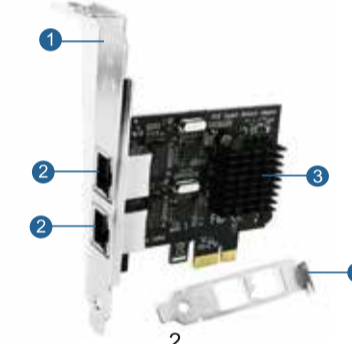
Model: PCE-NIC1 PCE-NIC2
Site:www.lteriver.com Email:support@lteriver.com

1

PCE-NIC1 1-Port PCIe Gigabit Ethernet Adapter



PCE-NIC2 2-Ports PCIe Gigabit Ethernet Adapter



2

- 1 Standard Size Bracket
- 2 RJ45 Interface
- 3 Heat Sink
- 4 Low profile bracket

PCE-NIC1 Product Description

PCE-NIC1 is a PCIe X1 gigabit network interface controller card. Allow desktop computers upgrade to the latest gigabit ethernet by PCIe X1 slot.Will auto-communicate with router and adjust ethernet speed to10/100/1000Mbps.Supports link change wake up,Wake-On-LAN and remote wake-up. Supports 32-set 128-byte Wake-Up Frame pattern exact matching.Supports Microsoft WPI (Wake Packet Indication). Fully compatible with IEEE 802.3,IEEE 802.3u,IEEE 802.3 ab.Supports IEEE 802.1P Layer 2 Priority Encoding and IEEE 802.1Q VLAN tagging.Supports IEEE 802.3az-2010 (Energy Efficient Ethernet) and Full Duplex flow control.

Compatible System:

Windows:Driver free on Windows 11,10,8.1,8,Server 2012, 2012R2,2016,2019,2022 (32/64bit) systems.Need to install driver on Windows 7,Vista,XP,Windows Server 2003, 2003R2,2008,2008R2(32/64bit) system.

Linux Kernel:Supports most main stream Linux,Unix kernel.
NOTE:This model do not provide driver CD anymore,please visit our site www.lteriver.com to download driver.

Package List:

- 1X PCE-NIC1
- 1X User manual
- 1X Mount screw
- 1X Low profile bracket

3

PCE-NIC2 Product Description

PCE-NIC2 is a dual ports PCIe X1 gigabit network interface controller card.Allow desktop computers upgrade to the latest gigabit ethernet by PCIe X1 slot.Each port will auto-communicate with router and adjust ethernet speed to10/100/1000Mbps.Supports link change wake up,Wake-On-LAN and remote wake-up.Supports 32-set 128-byte Wake-Up Frame pattern exact matching.Supports Microsoft WPI (wake packet indication).Fully compatible with IEEE 802.3,IEEE 802.3u,IEEE 802.3ab.Supports IEEE 802.1P Layer 2 Priority Encoding and IEEE 802.1Q VLAN tagging.Supports IEEE 802.3az-2010 (Energy Efficient Ethernet) and Full Duplex flow control (IEEE 802.3x).Supports jumbo frame to 9K bytes,quad core Receive-Side Scaling (RSS) and Protocol Offload (ARP & NS),Microsoft NDIS5,NDIS6 Checksum Offload (IPv4,IPv6,TCP,UDP) and Segmentation Task-offload.

Compatible System:

Windows:Driver free on Windows 11,10,8.1,8,Server 2012, 2012R2,2016,2019,2022 (32/64bit) systems.Need to install driver on Windows 7,Vista,XP,Windows Server 2003, 2003R2,2008,2008R2(32/64bit) system.

Linux Kernel:Supports most main stream Linux,Unix kernel.
NOTE:This model do not provide driver CD anymore,please visit our site www.lteriver.com to download driver.

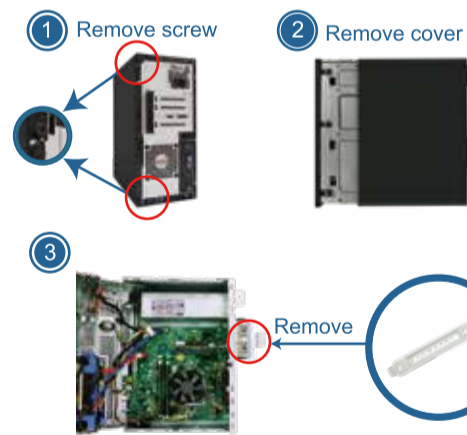
Package List:

- 1X PCE-NIC2
- 1X User manual
- 1X Mount screw
- 1X Low profile bracket

4

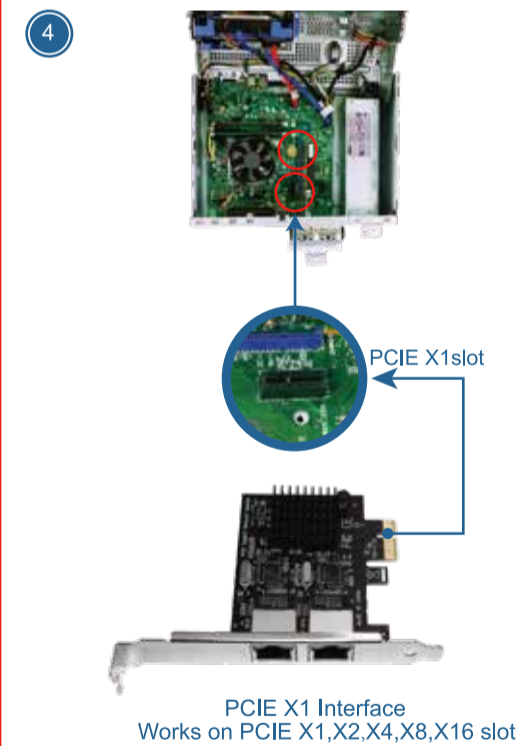
Add Network Card on Desktop PCs:

Step1,Switch OFF PC,unplug computer from main socket,unplug power cord and other connected peripherals.Remove the cover from computer case.



Step2,Find correct PCI Express slot from motherboard, insert PCIe network card into an empty PCI-E slot.

5



6

Step3,Reattach the computer cover,and put back removed peripherals,power on desktop computer.



Added on network card RJ45 port

7

Check If Network Card Works on Computers:

1.Users can plug in RJ45 cable from routers, check if PC can detect the network or not. If PC have detected the network, then no need to read the rest of this user manual. If PC can not detect the network, then go on reading rest of user manual.

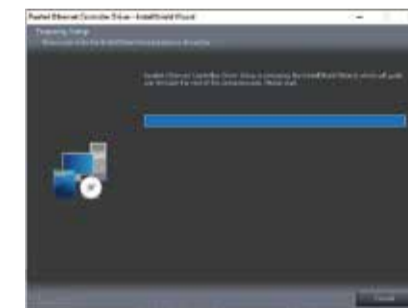
Step2,Complete driver installation.

1.Doule right-click"Setup.exe".



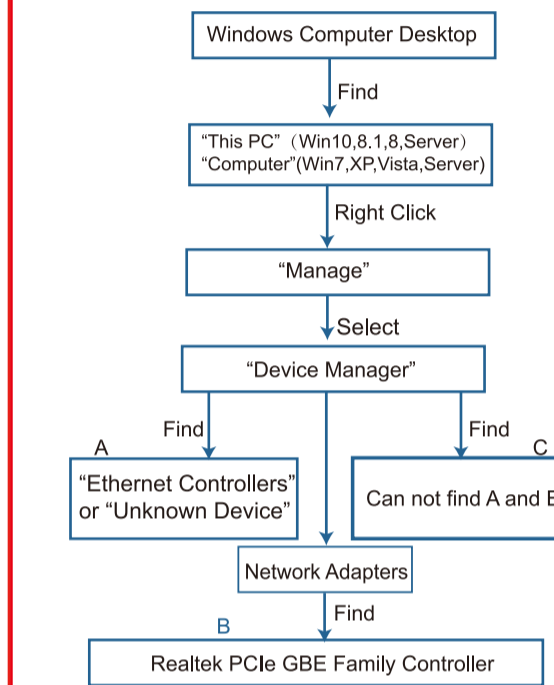
Setup.exe

2.Waiting files ready to install.



10

2.Find this added on network card hardware in Windows system "Device Manager" and check if system read it.



8

3.Click "Next".



4.Click"Install".



11

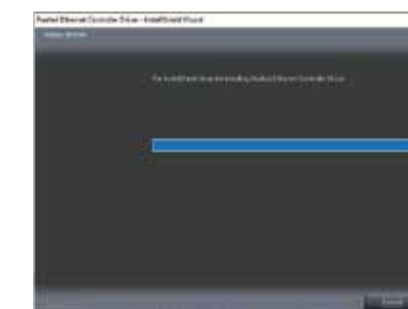
A.Means PCs find hardware correctly,need to install driver.
B.Means network card hardware correctly placed and system loaded driver already, users can use it now.
C.Means PCs can not find the added on network card and not load driver.1. Users need to re-plug network card on motherboard PCIe slot.2. Users better change to another active PCIe slot for this network card.

Install Driver on Desktop PCs:

1.PCE-NIC1 and PCE-NIC2 are based on Realtek 811 serial network interface controller.These models share the same installation steps on Windows 11,10,8.1,8,7,Vista,XP and Windows Server 2003,2003R2,2008,2008R2,2012, 2012R2,2016,2019,2022(32/64bit) systems.
2.Most of Windows 11,10,8.1,8 (32/64bit) and Windows Server 2012,2012R2,2016,2019,2022 systems will load driver automatically.If it can not auto-load driver,but read "Ethernet Controller" in Windows "Device Manager,please install driver.
3.Most of Windows 7,Vista,XP(32/64bit) and Windows Server 2003,2003R2,2008,2008R2(32/64bit) systems will read as"Unknown Device" or "Ethernet Controllers" in "Device Manager",install driver please and it will work then.
Step1,A.Visit www.lteriver.com-Bottom of homepage, Click "Drivers"-Find model PCE-NIC1 or PCE-NIC2, download"Realtek811" ZIP file and release it. Find "Setup.exe" and double right-click.

9

5.Waiting for driver installation.



6.Click "Finish",and start using the new network card.



12